

TWO LOTS AVAILABLE FOR BUILD-TO-SUIT RETAIL, OFFICE & INDUSTRIAL

LOCATION: Sky Ranch Business Center
Hwy. 20/26 & Smeed Parkway
Caldwell, Idaho

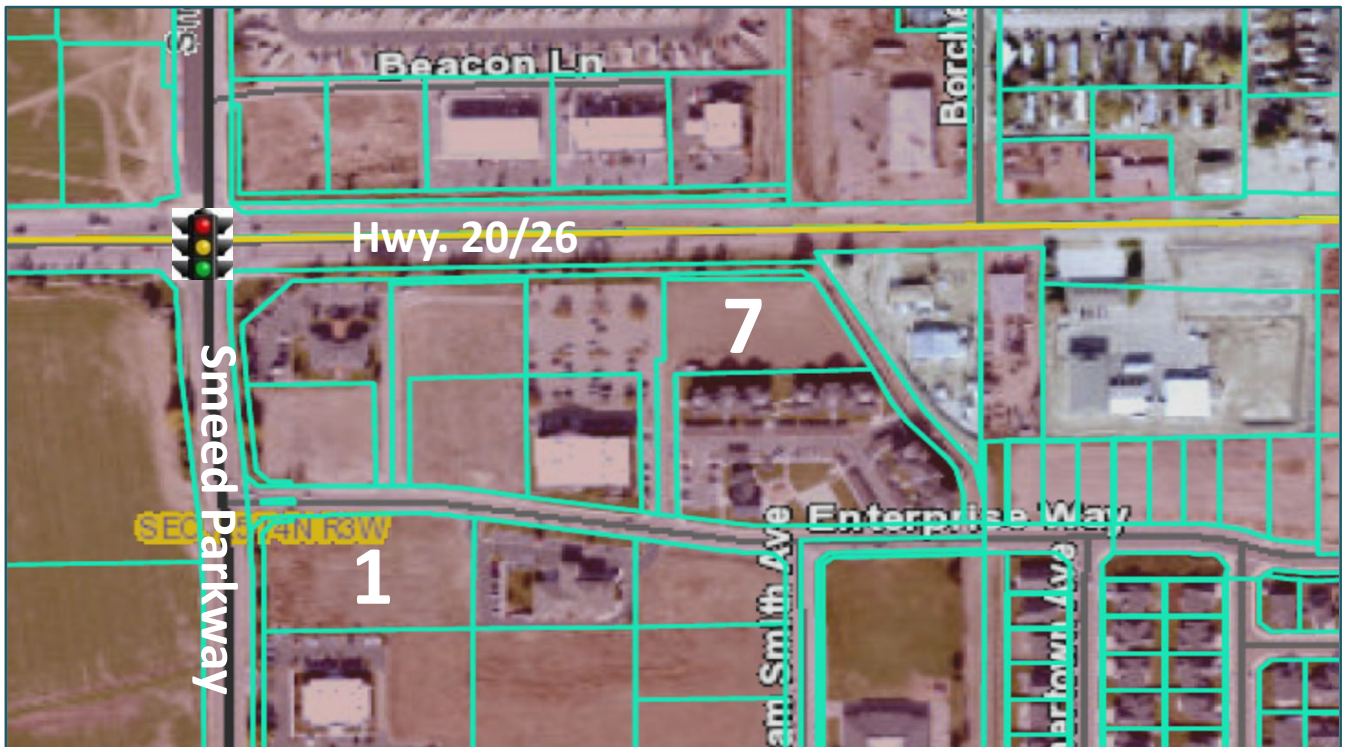
FEATURES: Hwy. 20/26 Access
Signalized Intersection
Near I-84 on/off ramp
Landscaping/Sidewalks
Protective Covenants
All utilities on site
Zoning C – 3

AVAILABLE: Lot 1: 82,620 SF
Lot 7: 66,565 SF

Ready for Build-to-Suite and Leasing



Sky Ranch Business Center is located in the rapidly expanding East Caldwell Market Area. Located just off Interstate 84 on Hwy. 20/26 and Smeed Parkway. Lots are developed and ready for ground up construction.



Contact: _____
RFR Properties, LLC, PO Box 2579, Eagle, ID 83616
www.rfrproperties.com

Bob Runyan: 208.863.8209 or br@rfrproperties.com

The information contained herein has been obtained by reliable sources, but is not guaranteed. This offering is subject to errors, omissions, prior sale, price change, and withdrawal.

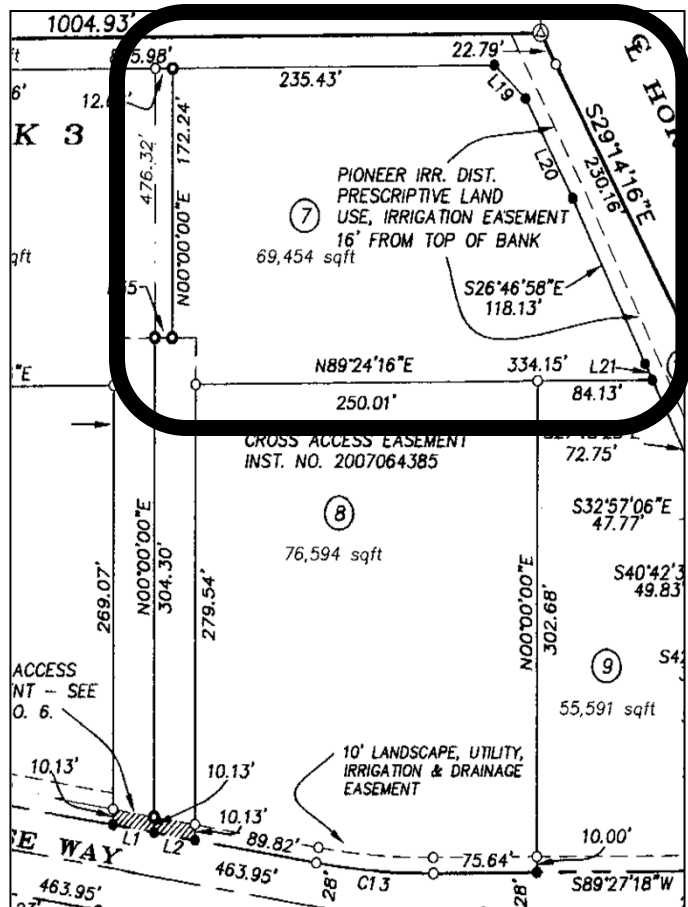
SKY RANCH BUSINESS CENTER

Commercial Lots ready for Build-to-Suit

Call for Building Options

Lot 7, Block 3, Phase 2

- 66,655 Square Feet
- Hwy. 20/26 Frontage
- Access off Smeed Parkway
- Signalized Intersection
- Fully Improved



Lot 1, Block 4, Phase 2

- 82,620 Square Feet
- Smeed Parkway Frontage
- Signalized Intersection
- Fully Improved

