

Caldwell Crossing Flex Two

New Flex Building Available Office, Retail & Warehouse Space for Lease



LOCATION: 4618 Beacon Lane
Caldwell, Idaho 83605
NEC of Hwy. 20/26 & Smeed Pkwy.

BUILDING DESCRIPTION: Gross Bldg. 10,500 SF
Parking at 5/1,000 SF
Zone C – 3
Sprinklered
3-Phase Power
Separately Metered

AVAILABLE: Retail/Office and Warehouse.

Suite 100: 2,074 SF End Bay
\$2,300/Mo. NNN
Ready to occupy.
NNN @ \$0.24/SF/Month



Contact:

RFR Properties, LLC, PO Box 2579, Eagle, ID 83616

www.rfrproperties.com

Bob Runyan: 208.863.8209 or br@rfrproperties.com

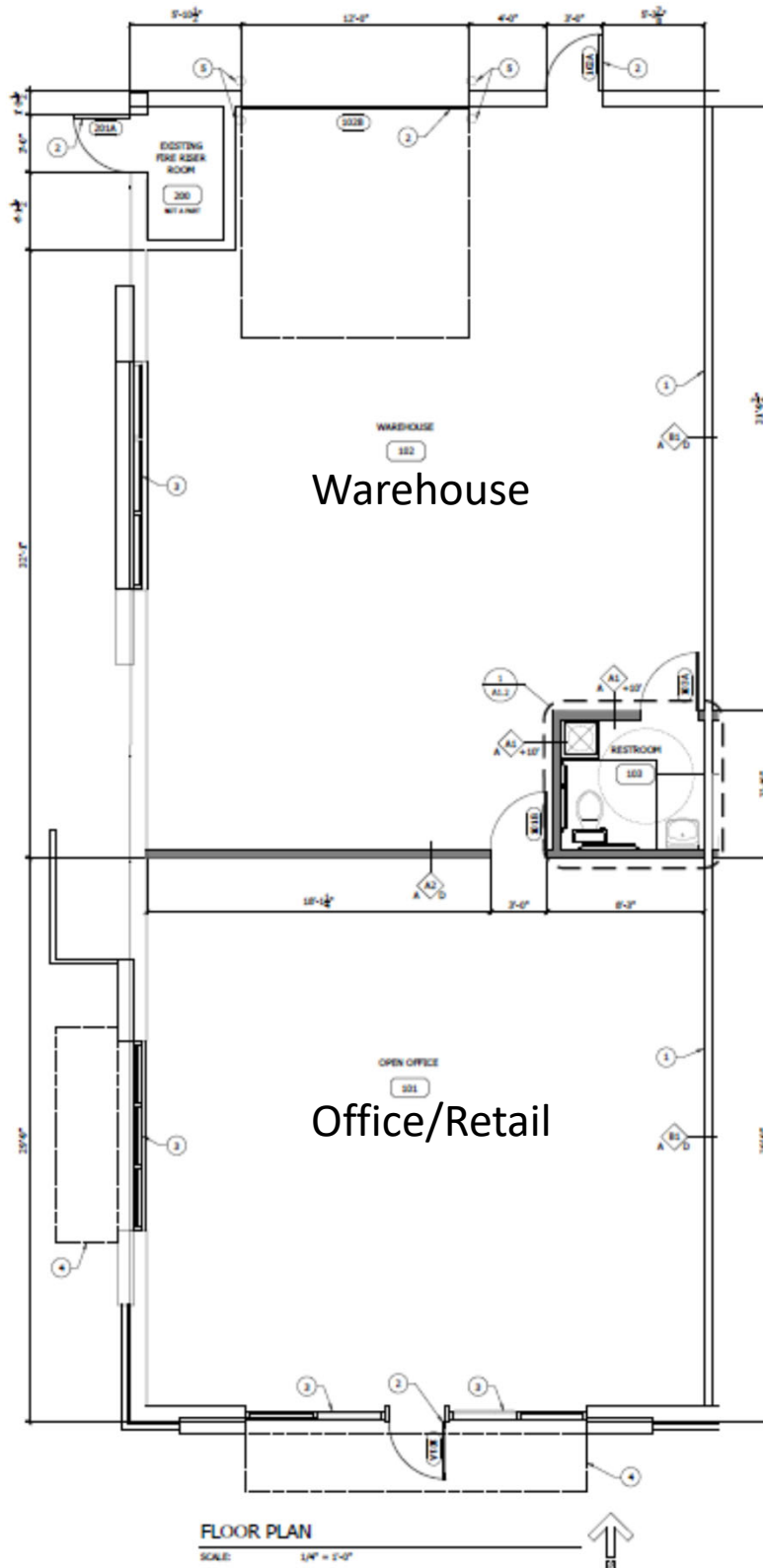
The information contained herein has been obtained by reliable sources, but is not guaranteed. This offering is subject to errors, omissions, prior sale, price change, and withdrawal.

Floor Plan

Additional Improvements Available

Office/Retail Area: 30' X 30'/Store Front

Warehouse Area: 30' X 40'/16' Ceiling/Overhead Door



Site Plan

